

# FC adapters

## Description:

The FC adapters are designed and manufactured according JIS, IEC, EIA/TIA and ANSI specifications for intermateability and optical performance. The FC adapters are offered in MM or SM performances, for connectors with PC and APC polishing method. It is possible to exactly specify your demands concerning keying slot width (standard Seiko Instruments or Seikoh Giken) for APC adapters, type of sleeve (phosphor bronze or zirconia) and adapter performance: various shape of flange, D-hole, DD-hole, etc.



## Features:

- Precision sleeve
- Screw-type locking
- Excellent detachability
- Low insertion loss
- Material metal
- High life time – more than 1000 mating cycles

## Application:

- designed for: PC standard - keying slot width = 2.40 mm
- APC standard Seiko Instruments - keying slot width = 2.15 mm
- APC standard Seikoh Giken, JDSU, ... - keying slot width = 2.05 mm

## Ordering code:

**A - FC / APC - XX - 205 - XX**

**215**

**A - FC / PC - XX - 240 - XX**

**Polishing Method**

**Width of Slots:**

**Type of Flange:**

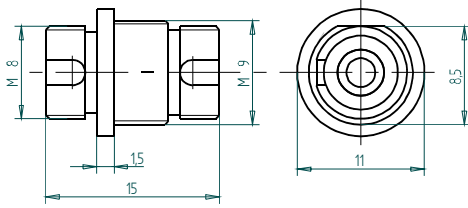
**Alignment Sleeve:**

205 2.05 mm  
215 2.15 mm  
240 2.40 mm

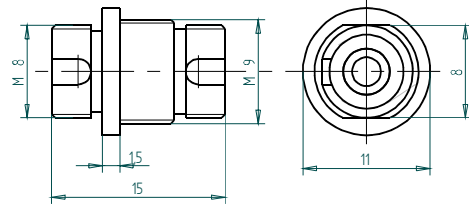
square flange 15x15 mm  
02 flange thickness 4.03 mm  
assembled from two parts  
07 flange thickness 2.03 mm  
08 flange thickness 4.03 mm  
  
circular flange, thickness 1.5 mm  
11 D hole Ø 11 mm  
12 DD hole Ø 11 mm  
04 D hole Ø 14 mm  
05 DD hole Ø 14 mm

oval flange 19x13mm  
13 flange thickness 1.5 mm

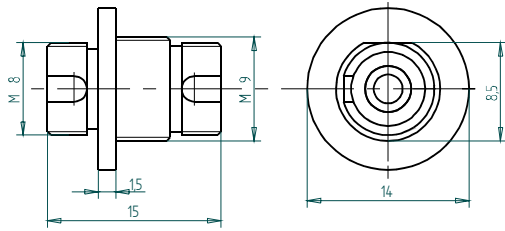
**Dimensions:**



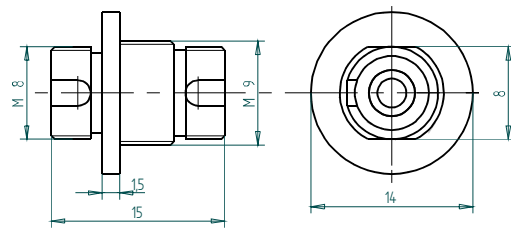
A-FC / (A) PC - XX - XXX - 11



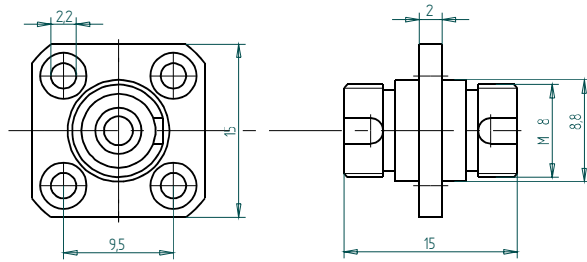
A-FC / (A) PC - XX - XXX - 12



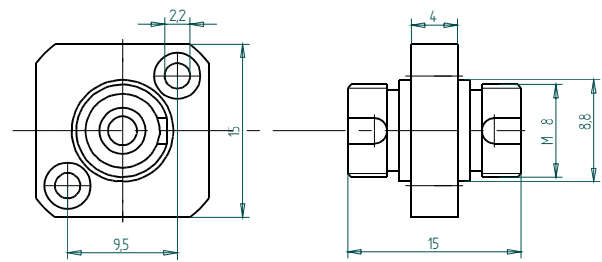
A-FC / (A) PC - XX - XXX - 04



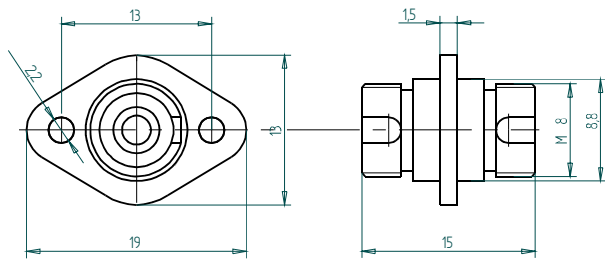
A-FC / (A) PC - XX - XXX - 05



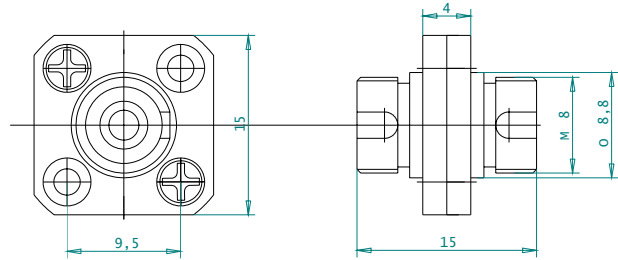
A-FC / (A) PC - XX - XXX - 07



A-FC / (A) PC - XX - XXX - 08



A-FC / (A) PC - XX - XXX - 13



A-FC / APC (A) PC XX- XXX - 02