

ST adapters

Description:

The **ST** (Straight Tip) optical adapter is a mechanical device used to precisely align and join two ST-style fiber optic connectors. It features a bayonet-style twist-lock coupling mechanism.

ST fiber optic adapters are compatible with all fiber types including single-mode (9/125 microns) and multi-mode (50/125 microns) fibers.

It is possible to exactly specify your demands of sleeve (polymer, phosphor bronze or zirconia) and adapter performance: metal or plastic.



Features:

- Easy installation and removal
- High repeatability and low attenuation
- Meets Bellcore GR-326 and TIA 568A performance standards
- Coupling body - zinc alloy, nickel plated or thermoplastic
- Threaded with nuts or snap-in coupling
- Dust caps

Application:

- LAN, WAN
- Measuring technique
- Utilities
- Railways

Ordering code:

A- (XX)-ST(-D) / PC - XX - XX - XX

Type of adapter

D Duplex ST
XX Hybrid type of input:
SC
FC
FDDI
ESCON

Sleeve

01 Zirconia
02 Phosphor bronze
03 Polymer

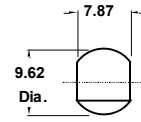
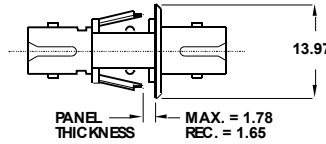
01 Flange
02 No flange

Body

01 Plastic with clip
03 Metal with thread

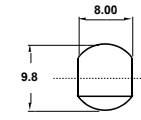
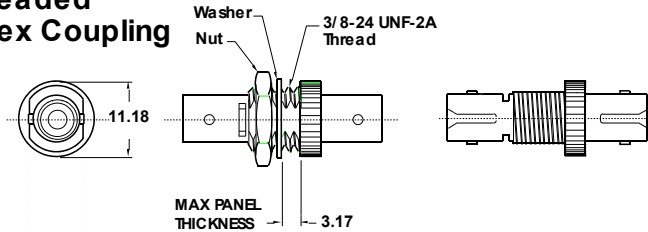
Dimensions:

ST Snap-in[®] Coupling



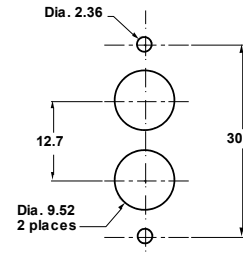
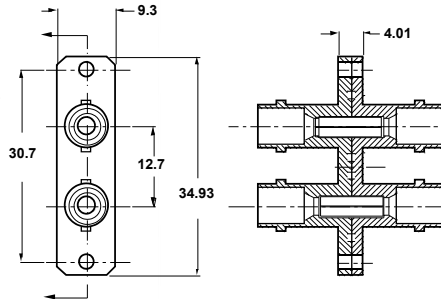
Recommended Panel Cut-out (minimum)

ST Threaded Simplex Coupling



Recommended Panel Cut-out (minimum)

ST Duplex Flange-mount Coupling



Samples of Adapters:

A-ST/PC-03-01-02



A-ST/PC-01-03-02



A-ST-D/PC-01-03-01



A-FC-ST/PC-01-01



A-SC-ST/PC-01-01BL-01



A-ESCON-ST/PC-01-01-MM



A-FDDI-ST/PC-01-1-M

